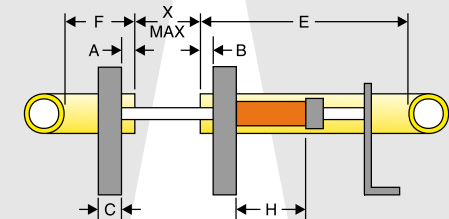


Reference Pipe & Fitting Installation Dimensions

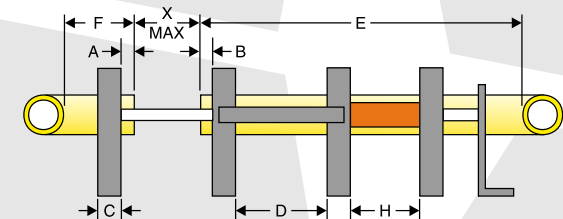
MACHINE (All dims. in inches)	A	B	C	D	E	F	F1	G MAX.	G MIN.	H	X MAX.
2CU	0.37	0.33	1	—	9.5	2.5	—	7.17	1.17	—	5.55
2LC	0.37	0.33	1	—	10	2.5	—	—	—	—	3.3
PitBull® 14	0.50	0.50	1.75	—	11.63	5.25	—	—	—	—	4
26	0.69	0.69	2	—	10.58	3.05	—	—	—	—	—
28 Rolling	0.50	0.50	2	17.5	28	23	3	11.25	2.5	9.5	8.5
TracStar® 28 & PitBull® 28	0.50	0.50	2	12	63	15	3	11.25	2.5	9.5	8.5
250 Wheeled	0.76	0.76	2	17.5	28	23	3	11.25	2.5	9.5	8.5
TracStar® 250 & PitBull® 250	0.76	0.76	2	12	63	15	3	11.25	2.5	9.5	8.5
412 Rolling	1	1	3	11.62	21	47	4.5	—	—	—	8.5
TracStar® 412	1	1	3	11.62	63	16	4.5	—	—	—	8.5
PitBull® 412	1	1	3	11.62	63	16	4.5	—	—	—	8.5
618 Rolling	1	1	3.75	11.59	21	48	5.75	—	—	6.25	7.25
TracStar® 618	1	1	3.75	11.59	58	20	5.75	—	—	6.25	6.25
PitBull® 618	1	1	3.75	11.59	17	18	5.75	—	—	6.25	6.25
TracStar® 500	1	1	3.75	6	64.25	22	—	—	—	7	6.50
PitBull® 500	1	1	3.75	6	17.50	17	6	—	—	7	6.50
824	1	1.37	3.75	26.25	51	36	6.12	—	—	17	18.50
TracStar® 630	1	1.37	3.75	26.25	66	32.50	8	—	—	17	18.50
1236	1	1.37	5	25	51	37.50	**	—	—	18	20
TracStar® 900	1	1.37	5	25	66	37.50	7.50	—	—	18	20
1648	2.25	2.25	6	37.69	83	52	***	—	—	22	14.50
2065	2.10	2.10	12.50	—	62.75	31	—	—	—	—	16
1600	2.10	2.10	12.50	43.88	62.75	71.50	15	—	—	6.50	16
DynaMc 28 HP 4 Jaw	.5	.5	2	6.8	18	12.86	4	—	—	7	5.44
DynaMc 28 HP 3 Jaw Config.	.5	.5	2	6.8	26.8	4.06	—	—	—	6.99	5.45
DynaMc 28 HP 2 Jaw	.5	.5	2	—	18.5	4.06	4.06	—	—	—	5.24
DynaMc 250 HP 4 Jaw	.76	.76	2	6.8	18.26	13.12	4.375	—	—	—	5.24
DynaMc 250 HP 3 Jaw Config.	.76	.76	2	6.8	27.06	4.32	—	—	—	6.99	4.93
DynaMc 250 HP 2 Jaw	.76	.76	2	—	18.76	4.33	—	—	—	6.99	4.724
DynaMc 250 AUTO 4 Jaw	.76	.76	2	6.8	18.27	13.13	3.566	—	—	7.01	4.92
DynaMc 250 AUTO 3 Jaw Config.	.76	.76	2	6.8	27.07	4.33	—	—	—	7.01	4.92
DynaMc 412 HP 4 Jaw	1	1	3	3.5	19.61	12.23	6.06	—	—	6	4.89
DynaMc 412 HP 3 Jaw Config.	1	1	3	3.5	26.11	5.73	—	—	—	6	4.89
DynaMc 412 HP 2 Jaw	1	1	3	—	19.61	5.7	—	—	—	6	4.42
DynaMc 412 AUTO 4 Jaw	1	1	3	3.5	19.55	12.56	6.06	—	—	6	4.95
DynaMc 412 AUTO 3 Jaw Config.	1	1	3	3.5	26.05	6.07	—	—	—	6	4.94

NOTES: A and B dimensions are after face-off, F and F1 dimensions allow for 1" of face-off material, F1 dimension shows unit removed from chassis or outer jaw removed, X MAX. dimension is jaws shown in full open position.

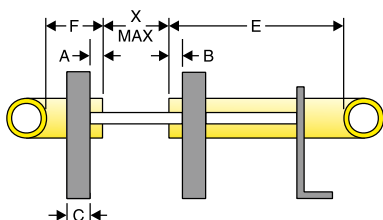
** 12.38 (Lower parking brake) or 36.00 (High parking brake)
 *** 23.50 (W/O parking brake) or 46.00 (With parking brake)



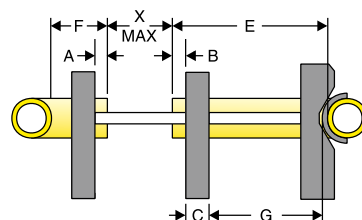
2-Jaw Machine
 (Applies to DynaMc HP and EP only)



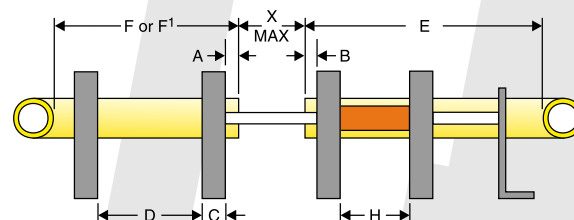
4-Jaw Machine in 3-jaw Configuration
 (Applies to DynaMc HP, EP and Auto Only)



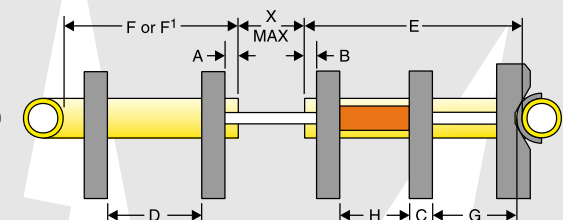
2-Jaw Butt Fusion Machine
 (Applies to 2LC, 2CU and 14)



2-Jaw Combination Fusion Machine
 (Applies to 2CU only)



4-Jaw Butt Fusion Machine
 (Applies to all 4-jaw machines)



4-Jaw Combination Fusion Machine
 (Applies to 28CU Only)