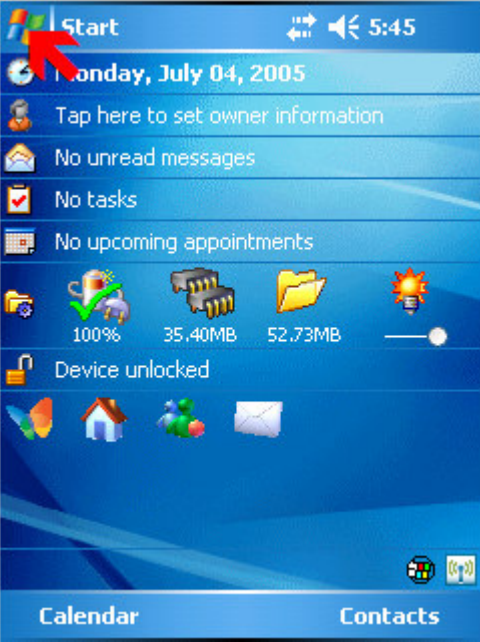
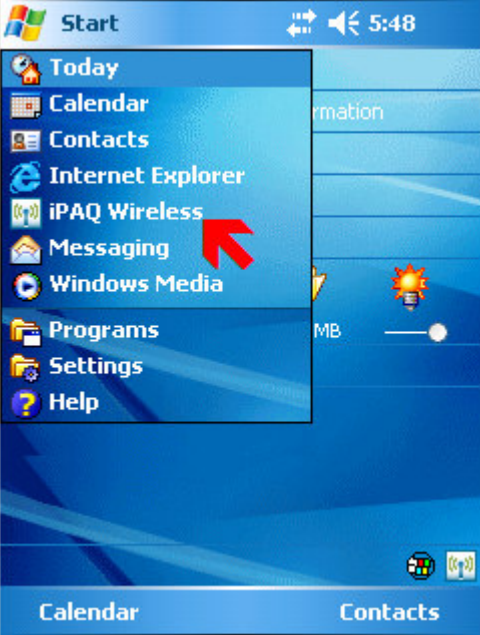
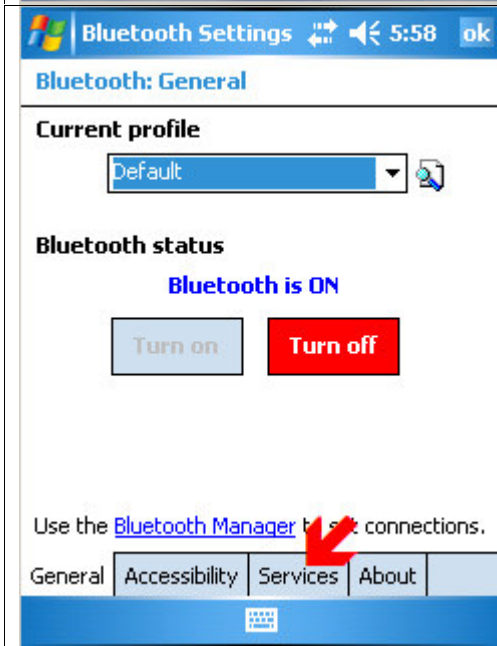


## Instructions for Setting up McElroy DL3 HP IPAQ Bluetooth®

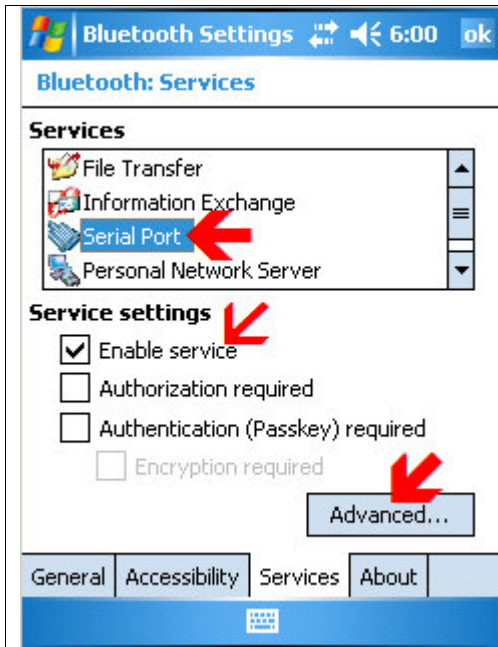
 <p>The screenshot shows the HP IPAQ Start menu. At the top left, the 'Start' button is highlighted with a red arrow. The menu includes a date bar for 'Monday, July 04, 2005', status indicators for 'No unread messages', 'No tasks', and 'No upcoming appointments', a battery level indicator at 100%, and a 'Device unlocked' notification. At the bottom, there are buttons for 'Calendar' and 'Contacts'.</p>	<p>1) Tap on <b>Start</b> to bring up the menu</p>
 <p>The screenshot shows the HP IPAQ Start menu with the Start menu open. A red arrow points to the 'iPAQ Wireless' option. The Start menu lists 'Today', 'Calendar', 'Contacts', 'Internet Explorer', 'iPAQ Wireless', 'Messaging', 'Windows Media', 'Programs', 'Settings', and 'Help'. The background shows the same status indicators as the previous screenshot. At the bottom, there are buttons for 'Calendar' and 'Contacts'.</p>	<p>2) Tap on <b>iPAQ Wireless</b></p>



- 3) Make sure the Bluetooth® Icon is green.
- 4) Tap on **Settings**



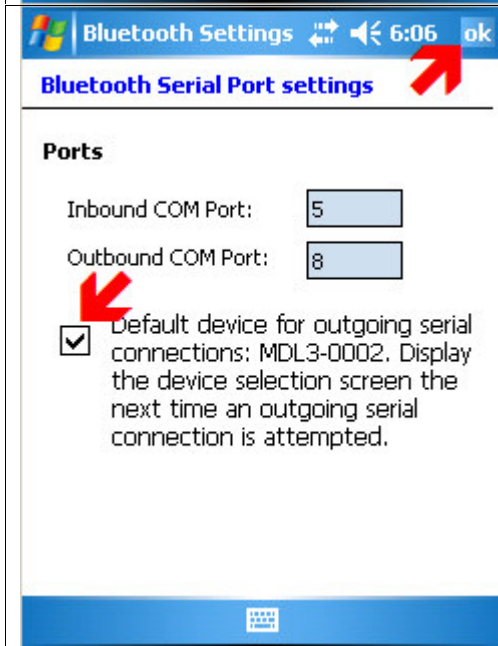
- 5) Tap on **Services**



6) Tap **Serial Port**.

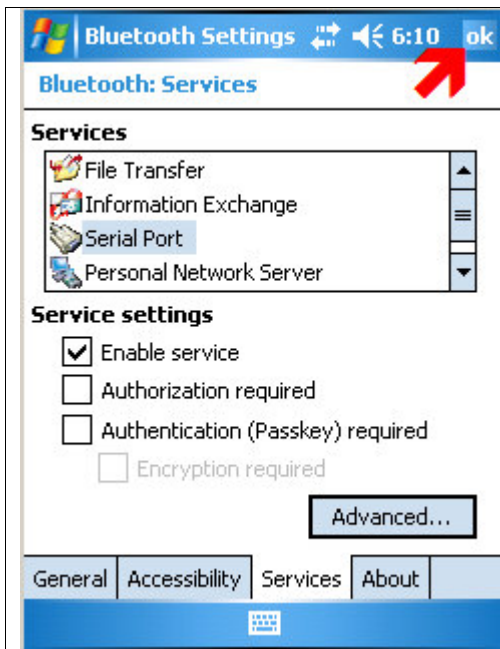
7) Make sure that **Enable Service** is the only one checked.

8) Tap **Advanced...**

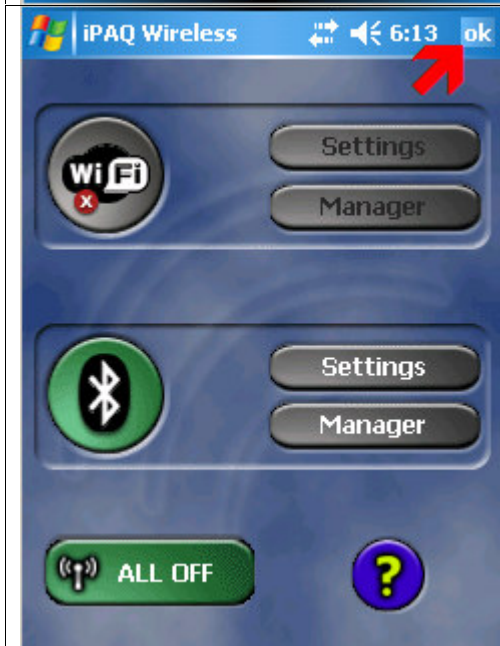


9) Make sure "**Default device...**" is checked.

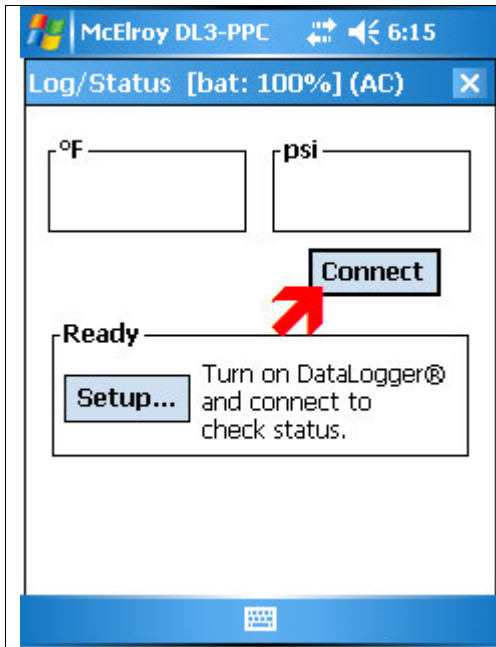
10) Tap **OK**



11) Tap **OK**



12) Tap **OK**



13) Start the McElroy DL3-PPC program, turn on the DataLogger® and connect to it.